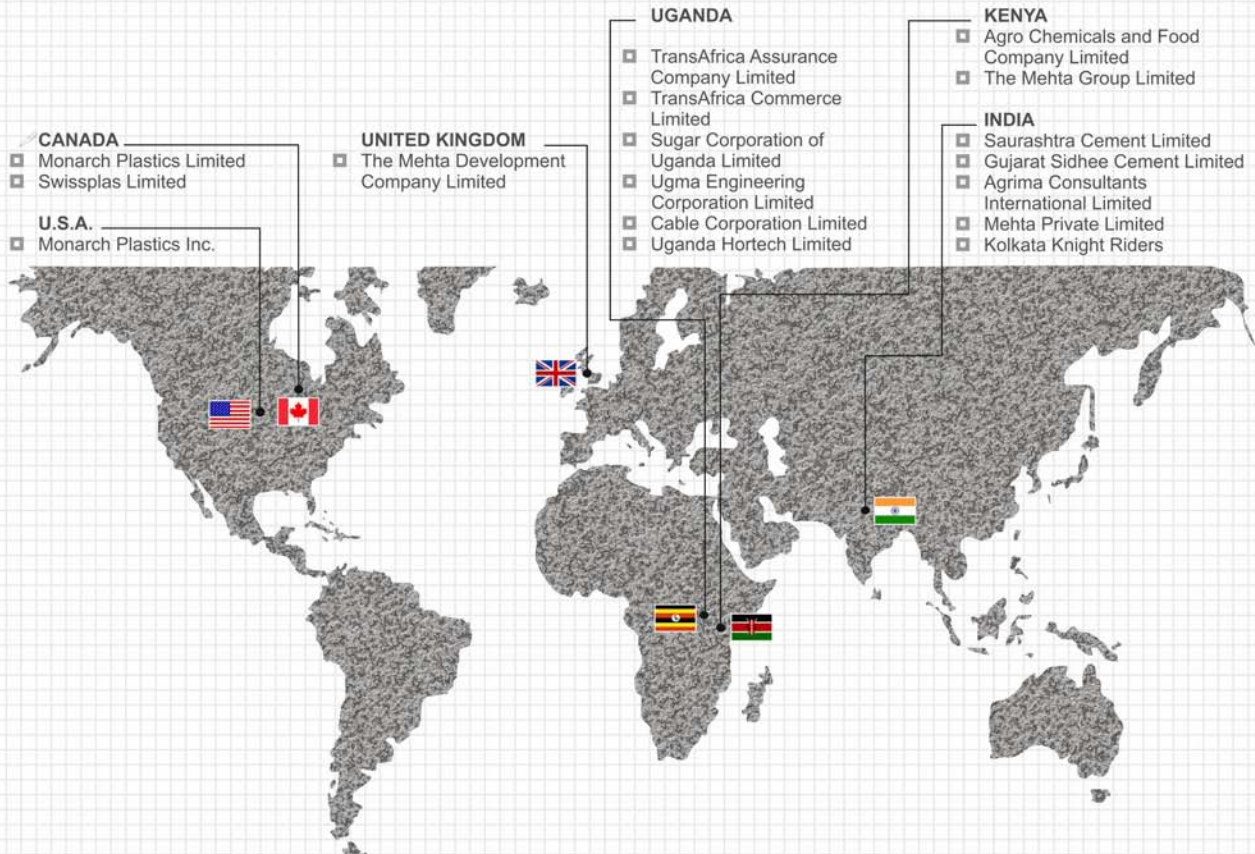




Sidhee[®]
CEMENT

About Us

Our founder, Mr. Nanji Kalidas Mehta, left his native land at age 13 in a country vessel bound for of Africa. He carried with him a spirit of adventure, determination to succeed and little more than his dreams. The year was 1900 and the unit of currency used to trade with the local tribes was Cowrie Shells.



The Mehta Group is a multi-activity multi discipline global enterprise spanning four continents - Asia, Europe, North America and Africa. The Group's business interests cover a wide and varied spectrum, which includes cement, building materials, sugar, packaging, electrical cables, engineering, consultancy, management & financial services, international trade, floriculture and horticulture.

The Indian Arm of the group comprises of Saurashtra Cement Limited, marketing cement under the brand name of 'Hathi'. Saurashtra Cement Limited is an OHSAS 18001; ISO 9001:2008; ISO 14001:2004 certified company manufacturing OPC 53 grade, 43 grade and Portland Pozzolana Cement, which complies to world class quality standards. The company is a recognized Export House and has won the Indian cement industry's prestigious national award for 'Energy Efficiency.'

Our Valued Customers

Gujarat State Police Housing Corporation
Sardar Sarovar Narmada Nigam Limited
(SSNL, Narmada Dam)
DIC-NNC (JV) Package IV: (NHAI Project).
Simplex Infrastructure Limited. (Tata Power Project)
Nagar Palika (various), TDO NREGA Works, Anand
Indian Oil Corporation Limited, Vadodara.
Sambhav Energy Limited, Sirohi, Rajasthan.
Subhash Project & Marketing Limited, Rajasthan
Modern Road Makers
Marketing Yard, Rajkot
JP Structures
Junagadh – Veraval Road Project
Junagadh Krushi University, Dhari
Garden Silk Mills Limited, Surat
Dahej SEZ Limited, Dahej.
Ajanta Limited, Morbi
Shanti Construction Limited
Patel Infrastructure Limited, Rajkot, Gujarat.
Kunal Structure (I) Pvt Limited.
Backbone Enterprise Limited-
(NHAI Project/ BRTS project/ Pipavav Port project)
Reliance Industries Limited



SIDHEE PPC

Long lasting strength for years...

Highlights

SIDHEE PPC is produced from one of the finest limestone resources in the country, supported by advance process controls. What makes SIDHEE PPC cement chemistry very effective?

- ★ **Regulated Heat of Hydration** ensures controlled release of heat in the exothermic reaction, thus retaining moisture, giving crack resistant property.
- ★ **Active Pozzolona** leads to dense concrete and prevents Alkali/Chloride penetration protecting steel reinforcement against corrosion and leaching.
- ★ **Active Silica** forms gel compound. This gel leads to continuous strength gain ensuring longevity to construction.
- ★ **Uniform fineness-** With low water-cement ratio (enabling less water consumption and high strength), SIDHEE PPC gives better workability resulting in superior finish.

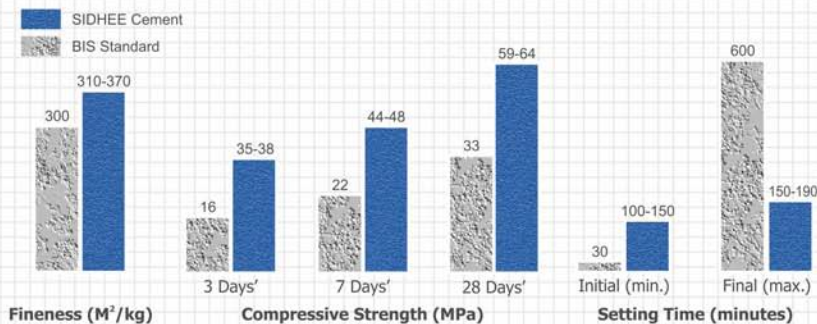
SIDHEE PPC with **Active silica** and unique cement chemistry protects construction against adverse weather and soil conditions. It is also eco- friendly product.

Thus, SIDHEE PPC is a unique environment c o m p l i a n t durable cement.



Ideal Applications

- ★ For all types of plain & reinforced works in residential, commercial and industrial complexes both on land and near the sea-shore.
- ★ Grouts & mortars.
- ★ Mass concrete works like dams, lining of canals, roads, etc.
- ★ Rehabilitation and repairing works.
- ★ Asbestos cement products.
- ★ Plastering and pointing works.



PPC

SIDHEE OPC 53 Grade

For Strength and Durability

Highlights

High grade cement with a consistent 28 days' compressive strength of the order of 63-68 MPa when tested in BIS approved laboratories. Particularly useful for structural applications involving concrete of high strength.

SIDHEE-Chemistry Advantages

- ★ **Low Heat of Hydration(HOH):** C_3S and C_2S scientifically balanced to control HOH. It allows structure to gain strength with time ensuring sound durability. SIDHEE has low heat of hydration resulting in low water/cement ratio.
- ★ **Low Magnesia Cement:** Magnesia causes expansion beyond 28 days of setting. Effect is visible in the form of cracks only after 8-12 months of work. SIDHEE has low Magnesia (<0.90%) making it crack resistant cement.
- ★ **Low Alkali & Chlorides:** Alkali and silica (from aggregates) under goes chemical reaction causing expansion, which over a period corrodes concrete. SIDHEE has low alkali & chlorides content (<0.5%) ensuring long-term protection to structure.

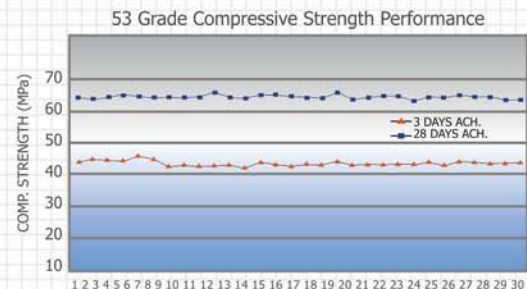


Highlights

High grade cement with a consistent 28 days' compressive strength of the order of 63-68 MPa when tested in BIS approved laboratories. Particularly useful for structural applications involving concrete of high strength.

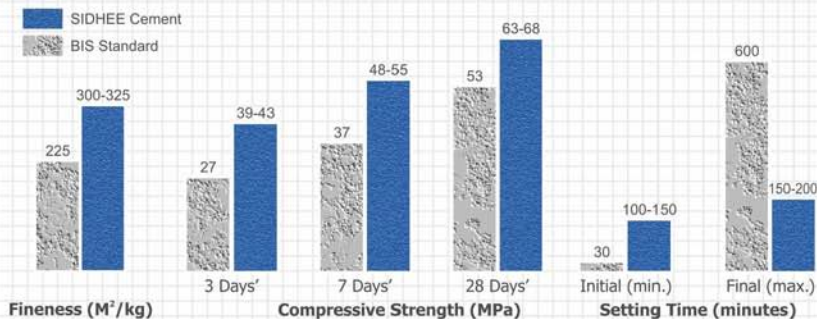
SIDHEE-Chemistry Advantages

- ★ **Low Heat of Hydration(HOH):** C_3S and C_2S scientifically balanced to control HOH. It allows structure to gain strength with time ensuring sound durability. SIDHEE has low heat of hydration resulting in low water/cement ratio.
- ★ **Low Magnesia Cement:** Magnesia causes expansion beyond 28 days of setting. Effect is visible in the form of cracks only after 8-12 months of work. SIDHEE has low Magnesia (<0.90%) making it crack resistant cement.
- ★ **Low Alkali & Chlorides:** Alkali and silica (from aggregates) under goes chemical reaction causing expansion, which over a period corrodes concrete. SIDHEE



Ideal Applications

- ★ For slabs, beams and columns.
- ★ Residential, commercial, industrial complexes, multi-storeyed buildings, silos, chimneys.
- ★ Prestressed concrete units like electrical transmission poles, bridge-girders, etc.
- ★ Concrete roads, runways, bridges, flyovers, culverts, etc.
- ★ Overhead & underground water tanks, water retaining structures.
- ★ Other applications as tiles, grills, concrete sleepers, etc.



OPC 53 Grade

SIDHEE OPC 43 Grade

Guards against concrete break-up

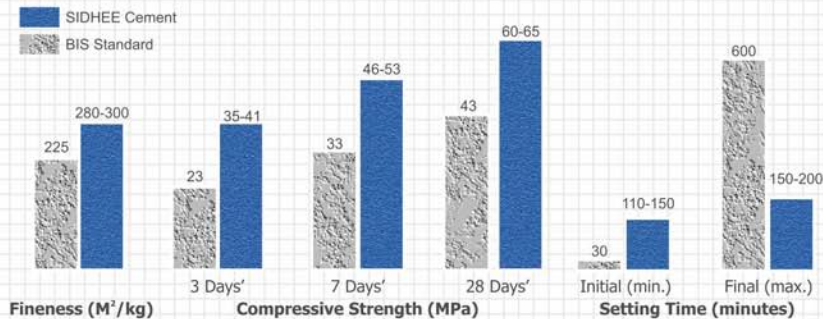
Highlights

- ★ High grade cement with a consistent 28 days' compressive strength of the order of 60 to 65 Mpa.
- ★ Greater cement fineness leads to better workability for a given water content, resulting in cohesive concrete.
- ★ Ensures dense, homogeneous, impervious & watertight concrete.
- ★ Increasing life of structure not only by high strength, but also by providing adequate durability.



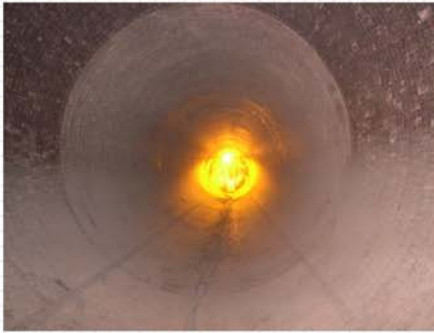
Ideal Applications

- ★ Suitable for most structural concrete constructions.
- ★ Residential and commercial complexes.
- ★ Flooring & wall tiles, dado, etc.
- ★ Asbestos cement products and Ferro-cement works.
- ★ Works like dams, bridges, flyovers, canals, etc.
- ★ Masonry work like brickworks, blockwork, etc.
- ★ Concrete Roads.



OPC 43 Grade

BIC Manufacturing Process





Corporate Office:

N. K. Mehta International House,
Agrima Business Centre, 3rd floor,
178, Backbay Reclamation,
Babubhai Chinai Marg,
Mumbai - 400 020.
Phone: (+91 22) 66365444
Fax: (+91 22) 66365445

Works:

Saurashtra Cement Limited
Near Railway Station,
Ranavav - 360 560.
Dist. Porbandar.
Gujarat- India
Phone: (+91 2801) 304200
Fax: (+91 2801) 304384

Gujarat Sidhee Cement Limited
Veraval-Kodinar Highway,
Sidheegram - 362 276.
Tal. Sutrapada, Dist. Junagadh.
Gujarat- India
Phone: (+91 2876) 308200
Fax : (+91 2876) 286540

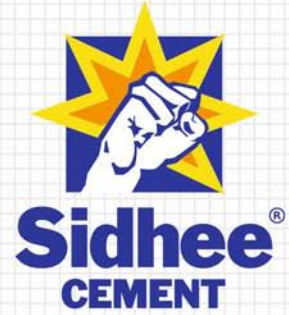
Mumbai Marketing Office:

Gala No. A -1, Ground Floor,
Udhyog Sadan No. 3,
MIDC, Central Road,
Andheri (East),
Mumbai-400 093.
Phone : (+91 22) 32955557 / 67
Telefax : (+91 22) 28262288

Central Marketing Office:

Ahmedabad:

'Pelican' 7th floor,
Gujarat Chamber of Commerce
& Industry Complex,
Ashram Road,
Ahmedabad -380 009.
Phone: (+91 79) 26580135/37
(+91 79) 30042200
Fax: (+91 79) 26587265



GUJARAT SIDHEE CEMENT LIMITED

www.mehtagroup.com

Notes:

GUJARAT SIDHEE CEMENT LIMITED



Central Marketing Office: 'Pelican' 7th floor, Gujarat Chamber of Commerce & Industry Complex,
Ashram Road, Ahmedabad -380 009. Phone: (+91 79) 26580135/37, 30042200 Fax: (+91 79) 26587265
www.mehtagroup.com